



TUB & SHOWER DOORS

## Samuel Müller Luxury SHOWER DOORS

Designed with quality craftsmanship, our Samuel Müller Shower Door Collection offers a distinctive, sophisticated look with attractive hardware finish options to match.

Samuel Müller Collections cover a variety of sizes, styles, configurations, and key features to complement your bathroom's interior design and layout perfectly.



Ready to upgrade from the curtain? If you want to create a stylish, modern look for your bathroom, installing a shower or bathtub door has never been easier. With more styles, colors, handles and glass options, you're sure to find something that suits your style.

Samuel Müller offers A LOT of shower door options in a range of styles, colors and prices—including some very attractive framed and frameless models. Browse through and discover the best choice for your bathroom.

- Unique Door Collections
- Modern, Attractive Finishes
- Very Stylish Handles options
- Glass Options



TUB & SHOWER DOORS

## Shower Door SPECIAL FEATURES

Additionally, Samuel Müller SHOWER DOORS come stock with special features, including Nano Glass, Extra Tall Shower Doors, and the special closing mechanism known as **TruMOTION®**.

Nano technology helps to keep your glass sleek and clean. Also used for windshields, this hydrophobic coating makes glass surfaces easier to clean by making them water, oil and stain resistant.

## Nano Technology Glass Coating

Nano Coating provides a LONGER LASTING effect, keeping your shower door squeaky clean and visually appealing.

- NO to soap scum and hard mineral deposits
- Water and oil resistant, resists bacteria, reduces mold and mildew growth
- Provides easier & less frequent cleaning, meaning fewer harsh cleaning chemicals in the shower and down the drain.
- Contributes to a cleaner, healthier & safer showering environment.



Nano Coating



No Coating

## Extra Tall Shower Doors

Our shower doors offer more room to get in and get out. Our doors are up to 8 inches taller than the standard 72" high shower door.



## Impressive Glass Door Options

Consider whether you prefer a bit of privacy or want to let in as much light as possible. Both clear and patterned frosted shower door glass are available. Maybe you'd prefer low-iron glass, which features maximum clarity and color neutrality—clear to the edge, without the green tint of our traditional glass.

For stability and overall soundness, our shower door glass is available in 6mm (1/4") & 8mm (5/16") and 10mm (3/8").



Traditional Clear Glass



Low Iron Glass



Frosted Glass

## Shower Door HANDLES

Of course picking out the glass is a crucial part of designing your custom glass shower enclosure, but so is choosing the perfect hardware. Some of our showers have lots of metal while others have hardly any, but it's always important to thoughtfully pick the style and finish. In fact, the perfect combination of glass and metal is what makes a shower enclosure design a success.

Prefer something sleek and uncomplicated? Opt for the Tyler, Sampson or Contour handles. Something more elegant and ornamental? The Nicholson handle is a great choice.

Don't be afraid to try several different looks before choosing the one that's right for you.



TUB & SHOWER DOORS

## Meridian, Diamond & Pinnacle Shower Door Hardware Series

Our extensive collection of high end handles adds a distinctive, high-end look to your shower door. Choose either a handle/handle, or handle/knob combination for your door.

\*TYLER (T)



SAMPSON (S)



CONTOUR (C)



ROYSTON (R)



JULIETTE (J)



\*BARRINGTON PLAIN (BP)



\*BARRINGTON KNURLED (BK)



\*NICHOLSON (N)



\* Matching grab bar available in different sizes.



TUB & SHOWER DOORS

# TruMOTION

Samuel Müller SHOWER DOORS use **TruMOTION**® special mechanisms for a slow-close action.

Featured in our shower doors, it allows the doors to close softly and elegantly no matter how hard you close them or how heavy the door may be.

**SMEBPT6080C** ▶  
**EYE DROP**  
**BY-PASS DOOR**  
 Shower Doors  
 W60" x H80"



Our high quality rollers allow the door to glide smoothly along the track, while the **TruMOTION**® mechanism allows the door to close gradually, which prevents slamming and extends product life.

## Shower Door GLASS & COLORS

Doors	Glass Options			Door Colors		
	Glass Pattern (Clear)	Glass Pattern (Low Iron)	Glass Pattern (Frost)	Polished Chrome (PC) Brushed Stainless (BS)	Matte Black (MB)	Champagne Bronze (CB)
BRADLEY	✓	✓		✓	✓	✓
TEUTONIC (+)	✓	✓		✓	✓	✓
INNOVA	✓			✓	✓	
EYE DROP	✓	✓		✓	✓	✓
BREVITY	✓		✓	✓	✓	✓
MILAN	✓		✓	✓	✓	✓
FRANKLIN	✓		✓	✓	✓	✓
CECELIA	✓			✓	✓	
LYDIA				✓	✓	
ETHAN	✓			✓	✓	✓



POLISHED CHROME PC



BRUSHED STAINLESS BS



MATTE BLACK MB



CHAMPAGNE BRONZE CB

## BRADLEY By-Pass Door

By-Pass shower door featuring modern, exposed double rollers on top. Includes **TruMOTION**® SOFT CLOSE feature. Top rail is 304 Stainless Steel available in 4 finishes.

Optional stainless steel side wall profiles allow up to 3/8" out-of-plumb adjustment on each side for uneven walls.



TUB & SHOWER DOORS



◀ **SMBYPT608010C-MB**  
**BY-PASS DOOR**  
SMDH-BPD-BP-MB  
**BARRINGTON PLAIN**  
**HANDLES**

**SMBYPT608010C-N-PC**  
**BY-PASS DOOR**  
SMPH-BPD-N-PC  
**NICHOLSON**  
**PLAIN HANDLES** ▼

ANSI certified tempered shower door glass with Nano coating for resistance to oil, soap scum and mineral deposits.

Select handles in Pinnacle Series, Diamond Series or Meridian Series also available in 4 matching finishes.

SMBYPT608010C-BS/SMPH-BPD-PC





TUB & SHOWER DOORS

## TEUTONIC Barn Door

Sliding Shower Door with fixed panel and 4 top mounted rollers. Door and fixed panel are reversible. 304 Stainless Steel top rail.

Heavy Stainless Steel rollers for smooth operation and effortless movement. Special Nano Protection surface treatment keeps glass looking clean and streak free. Available in 4 attractive finishes.



◀ SMTBD608010C  
**TEUTONIC  
 BARN DOOR**  
 SMDH-BPD-K-J-CB  
**JULIETTE HANDLE & KNOB**

Double jam wall profile on the fixed panel side allows up to 1/2" out-of-plumb adjustment for uneven walls. Selective handles in Pinnacle Series, Diamond Series or Meridian Series.

Double sided handles and handle & knob options available.

## TEUTONIC Plus Barn Door

**TruMOTION**® featured sliding barn door with fixed panel and 4 top mounted rollers. Door and fixed panel are reversible. 304 Stainless Steel top rail.

Rollers are heavy stainless steel for smooth operation and effortless movement of door.

Special Nano Protection surface treatment that keeps glass looking clean. Wall profile on the fixed panel side allows up to 1/2" out-of-plumb adjustment for uneven walls.

Available in 4 attractive finishes.

SMTPTB608010L-PC / SMMH-BND-D-R-PC



TruMOTION (TM)

## INNOVA Pivot Door

Hinged Pivot Shower Door with fixed panel. Brass hinges for reliable operation. Support bar features a "hardly there" appearance, and is 304 stainless steel. Available in 3 beautiful finishes.

Two side wall profiles allow up to 1/4" out-of-plumb adjustment on each side for uneven walls. Can be trimmed up to 4" width adjustment.

Special Nano Protection surface treatment keeps glass clean.

SAMUEL  
MÜELLER

TUB & SHOWER DOORS

SMIPD487610C-PC ►  
**INNOVA  
PIVOT DOOR**  
SMMH-BND-D-R-PC  
**ROYSTON HANDLES**



Pinnacle, Diamond, and Meridian Series handle choices are available for the Innova shower door in 3 matching finishes. Double sided handles and handle & knob combinations are available in these series.



TUB & SHOWER DOORS

### EYE DROP By-Pass Door

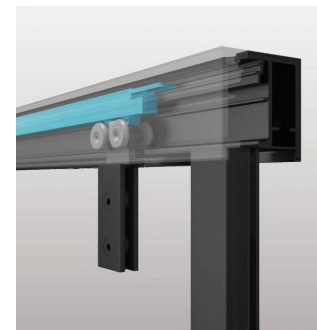
TruMOTION® SOFT CLOSE is included on this attractive By-Pass shower door. Clear, tempered glass with Nano easy clean coating is also available. Frames are 304 Stainless Steel, available in 4 finishes. Two side wall profiles allow up to 3/8" adjustment on each side.

Selective handles available from Pinnacle, Diamond and Meridian Series to further personalize your door.



◀ SMEBPT608010L-MB  
**EYE DROP  
BY-PASS DOOR**  
SMDH-BPD-J-MB  
**JULIETTE HANDLES**

TruMOTION



### BREVITY By-Pass Door

The clean, modern look of this By-Pass Shower Door features exposed double rollers on top bar. Offered in 3 finishes. 304 stainless steel support bar.

Optional wall profiles on the sides allow 3/8" on each side, for out-of-plumb adjustment.

Clear tempered glass with Nano easy clean coating. Selective handles in Meridian, Diamond, and Pinnacle Series are available for this door.

SMBRP607008C-BS / SMMH-BPD-S-BS



TruMOTION



## MILAN Barn Door

**TruMOTION**® featured barn door with fixed panel and 2 top mounted rollers. Attractive clear glass door is reversible.

304 Stainless Steel top rail and rollers for smooth operation and effortless movement. Wall profile on the fixed panel side allows up to 3/4" out-of-plumb adjustment for uneven walls.



TUB & SHOWER DOORS



◀ SMMBDT607608C-MB  
**MILAN**  
**BARN DOOR**  
SMMH-BND-D-S-MB  
**SAMPSON HANDLES**



Tempered glass with Nano easy clean coating helps keep this beautiful shower door clean.

Selective handles in Meridian, Diamond and Pinnacle Series available to complement your Milan door.

SMMBDT606008C-BS / SMMH-BNDD-R-BS



TUB & SHOWER DOORS

### FRANKLIN By-Pass Door

TruMOTION® SOFT CLOSE is FEATURED on this attractive By-Pass shower door. Clear, tempered glass with Nano easy clean coating makes cleanup quick and easy. Frame is 304 Stainless Steel and available in 3 attractive finishes. Towel bar handles are not included.

Selective handles from Pinnacle, Diamond and Meridian Series available for use with these doors.



◀ SMFBPT607608F-BS  
FRANKLIN  
BY-PASS DOOR



SMFBPT607608C-MB ▶  
FRANKLIN  
BY-PASS DOOR  
SMMH-BPD-S-MB  
SAMPSON HANDLE

## CECELIA By-Pass Door

Slim, modern-look By-Pass shower door. Clear, tempered glass with Aluminum frame is available in 3 attractive finishes.

Matte Black door includes glass with Nano easy clean coating. D-shaped Contour handles are included.



TUB & SHOWER DOORS



◀ SMCBP607606C-BS  
**CECELIA  
BY-PASS DOOR**

SMCBP606006C-BS  
**CECELIA  
BY-PASS TUB DOOR**



## LYDIA Pivot Door

Modern look slim pivot shower door 1/4"  
Clear tempered glass (only) and 70" high.

The Lydia door includes a distinctive chrome knob, and the swing frame is constructed of aluminum alloy.

The door has an aluminum magnetic profile and magnetic seal, which allows up to 3/4" out-of-plumb adjustment for uneven walls.

Available in 3 attractive finishes.

SMLSD367006C-PC / SMMH-BND-K-C-PC





TUB & SHOWER DOORS

## ETHAN Shower Doors Type A

**TruMOTION**® SOFT CLOSE 76" height hinged shower doors feature varying width doors to fit different sizes.

Hinges are heavy duty 304 stainless steel. Special Nano Protection surface treatment that keeps glass looking clean. 3/8" (10mm) thick glass. The door is reversible.

Type A includes wall mounted door only. Clear vinyl seal on the door gives a 3/8" out-of-plumb adjustment.



Clear Vinyl seal, implimented for each Ethan SHOWER DOOR



TruMOTION

◀ SMEHTA307610-C-BS  
**ETHAN TYPE A**

## ETHAN Shower Doors Type B

Type B includes wall mounted door and (1) stationary panel. The side wall profile on the stationary panel allows 1/2" out-of-plumb adjustment.

**TruMOTION**® SOFT CLOSE also included with the Ethan Type B.



TUB & SHOWER DOORS

SMEHTB30247610C-S-CB ▶  
**ETHAN TYPE B**  
Seen with  
BARRINGTON  
PLAIN CB-2HDLS





TUB & SHOWER DOORS

## ETHAN Shower Doors Type C & D

**TruMOTION**® SOFT CLOSE 76" height hinged shower doors feature varying width doors to fit different sizes.

Hinges are heavy duty 304 stainless steel. Special Nano Protection surface treatment that keeps glass looking clean. 3/8" (10mm) thick glass.



◀ **SMEHTC-30247610C-MB**  
**ETHAN TYPE C**

Type C includes one glass to glass hinged door and (1) stationary panel. Side wall profile on the stationary panel allows 1/2" out-of-plumb adjustment.

Clear vinyl seal on the door gives a 3/8" out-of-plumb, which is easily adjustable.

Type D includes one glass to glass hinged door and (2) stationary panel.

Side wall profiles on the stationary panels allow up to 1" out-of-plumb adjustment (1/2" on each side). Various door opening sizes available.

**SMEHTD-48247610C-BS** ▶  
**ETHAN TYPE D**



## ETHAN Shower Doors Type E & F

Heavy duty L bracket adds the extra support to the fixed panel. 24" wide hinged panel gives the option to the limited space bathroom with a smaller door. The door can fit in up to 84.5" maximum opening.



TUB & SHOWER DOORS

SMEHT-48247610C-MB ▶  
**ETHAN TYPE E**



Type E includes glass mounted door and one stationary panel with "L" bracket.

The side wall profile on stationary panel allows up to 1/2" out-of-plumb adjustment.

Clear vinyl seal on the door gives a 3/8" out-of-plumb adjustment.



Type F includes glass mounted door and two stationary panels w/ "L" bracket. The side wall profiles on stationary panels allow up to 1" out-of-plumb adjustment (1/2" on each side).

◀ SMEHTF-69277610C-PC  
**ETHAN TYPE F**



TUB & SHOWER DOORS

## ETHAN DOOR with Return Panel

Ethan Door with Return Panel

All types of Ethan doors can have a return panel. Simply add the Return Panel Model No. (based on the depth of the base) to the door you order to complete.

Our Ethan shower doors feature a unique TruMotion® slow closing hinge for effortless safe closing.

Never worry again about doors that are slammed shut.

This unique TruMotion® hinge features an adjustable 3 position timing enabling the user to adjust the closure from either slow or fast paced closing.



Stock size. Other sizes need 2 weeks lead time.

Stock size. Other sizes need 2 weeks lead time.

The glass doors and fixed panels feature 76" height. Nano coated surfaces for an easy to clean surface. Our Ethan door and panel system features extremely clean lines for a modern look. Models are available in swing door, door and inline panel, or door and glass to glass hinged panels. Our size range includes every size from 24" – 84.5" in width by 76" in height.

And for maximum flexibility, all of our doors are REVERSIBLE. Doors are also available with notched panels as well as return panels for additional flexibility as special order.